

ShuttlePRO v2 & ShuttleXpress

Product Manual



Shuttle Introduction

The Shuttle is a macro hub that can be used in combination with your keyboard and mouse. Using either stock or custom settings the Shuttle emulates keyboard shortcuts which improves productivity in the office, studio, home, and more. The Shuttle Pro v2 is a universal tool that supports hundreds of programs and controls the program that is in focus.

Getting Started

Because the Shuttle can be used with a variety of applications, the driver must be downloaded and installed before use. The driver can be downloaded from our support page <https://www.contourdesign.com/support/>.

Note to Windows users: After installing the Shuttle driver, please make sure the Shuttle icon is visible in the system tray (area near the clock) and not located in the hidden icons. This will allow you to tell which program is in focus for the Shuttle to communicate with. Please see question 8 on page 7 for more details.

The official Contour Shuttle forum is an online resource where Shuttle users can share and download both user created and official Contour Shuttle settings. Join the Shuttle community <http://forums.contourdesign.com/>.

For further assistance with your Shuttle please contact our support team at shuttle@contourdesign.com.

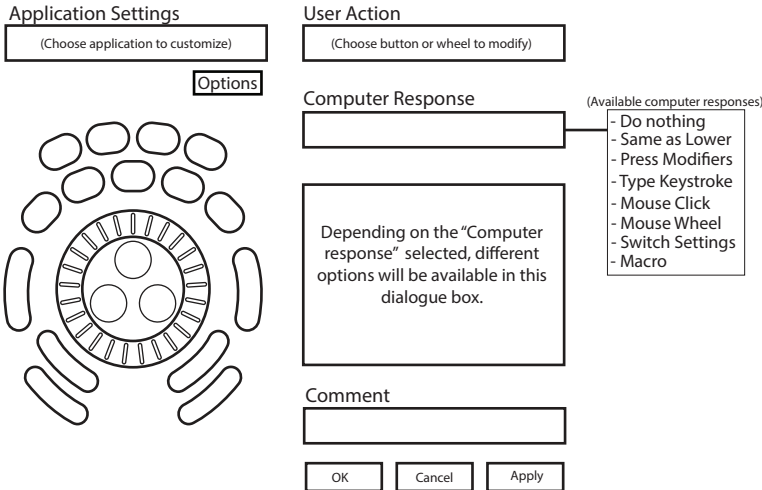
Creating New or Updated Settings

There are two main ways to create settings:

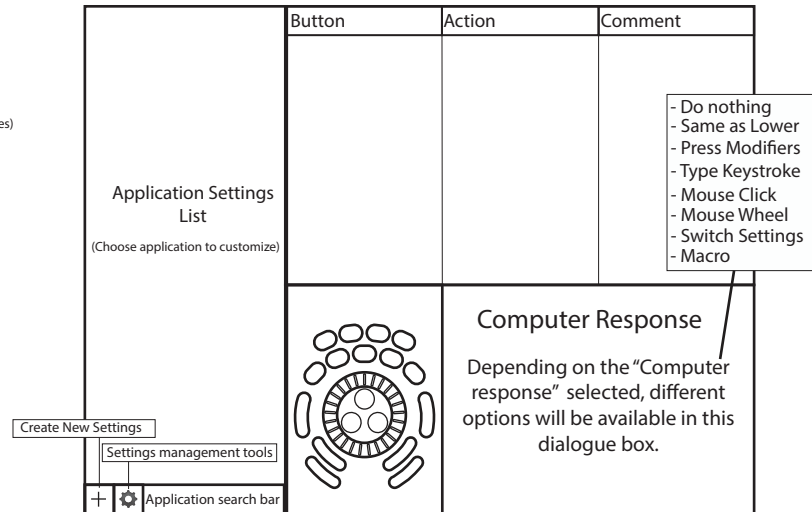
1. Create settings based on other settings. For example, if your media player has the same keystroke shortcuts as another program but doesn't have settings for the other program, new settings can be created off of the existing settings. This method can also be used to update settings to an application/program that has recently been updated.

2. New custom settings can also be created from scratch.

Windows Driver Outline



Mac OS Driver Outline



Creating New Settings (Windows)

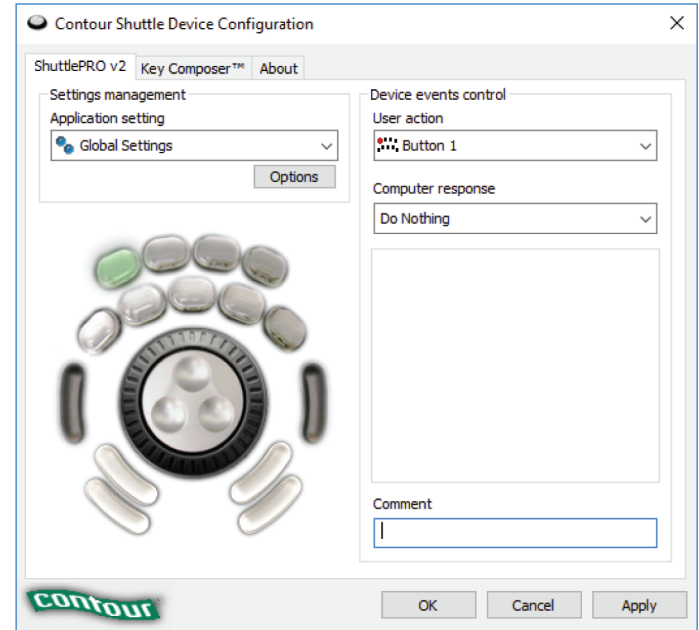
1. Copy Method:

In the Shuttle Device Configuration

- Highlight the settings to be copied in the application setting field.
- Click Options > Create New Settings > Copy contents from current settings.
- Choose the new program executable file in the file selector pop up.

2. Custom Settings Method:

- Click options > Create New Settings > Create Empty Settings
- Choose the new program executable file in the file selector pop up.



Creating New Settings (Mac)

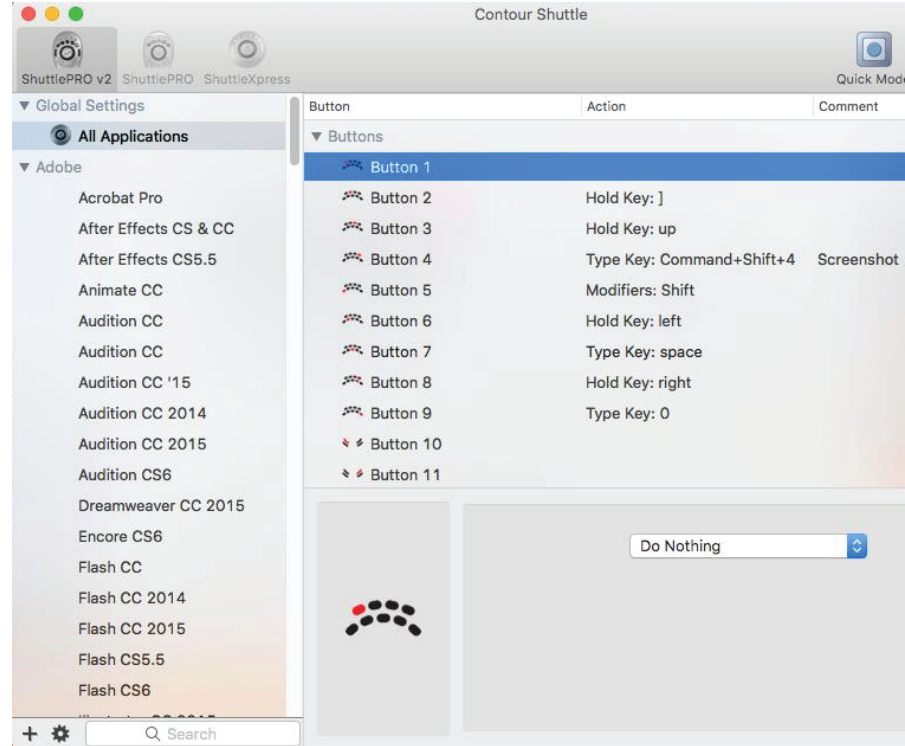
1. Copy method:

In the Shuttle Device Configuration

- Select the settings to be copied in the applications list.
- Choose "Copy to new settings..." in the Tools menu (gear icon at the bottom).
- Select the application you want to create settings for in the file picker that pops up.

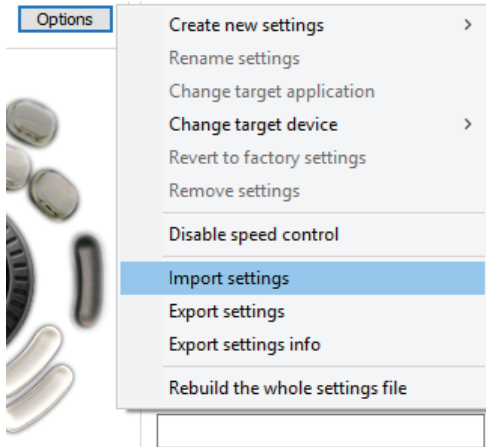
2. Custom Settings Method:

- Click the Tools menu (gear icon at the bottom)
- Choose "New Settings..."
- Select the application you want to create settings for in the file picker that pops up.



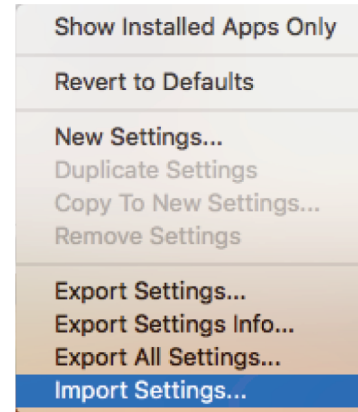
Importing Settings (Windows)

1. Download the file
2. Unzip the file and take note of the location
3. Open the Contour Shuttle Control Panel and click the Options button
4. Choose Import Settings
5. Navigate to the location noted in Step 2
6. Choose the settings file
7. Click the Open button on the screen
8. Click the Apply button on the screen (very important)



Importing Settings (Mac)

1. Download the file
2. Unzip the file and take note of the location
3. Open the Contour Shuttle app and click the Settings Management Tools button (Bottom-left corner of Shuttle App window)
4. Choose Import Settings
5. Navigate to the location noted in Step 2
6. Choose the settings file (settings file will have the .shuttleSettings tag, for example Final Cut Pro X.shuttleSettings).
7. Click the Open button on the screen



Frequently Asked Questions

1. What computer systems does the Shuttle work with?

The Shuttle will work on both Windows and Mac. Unfortunately we do not officially support Linux. However some end users have created drivers and plugins that do support Linux on our forum. Please feel free to search our forum for Linux support at <http://forums.contourdesign.com/>.

2. I lost some of the button covers from my Shuttle PRO v2. Can I order new ones?

You can call or email Contour Design, and we would be happy to send out some button covers to you, depending on the make of your Shuttle. Please email us at shuttle@contourdesign.com for more info.

3. Where can I find button labels for my Shuttle PRO v2?

You can download a PDF version of the Shuttle button labels from our website on the Shuttle PRO v2 product page, <https://www.contourdesign.com/product/shuttlepro-v2/>.

4. What programs/applications does the Shuttle work with?

There are hundreds of programs the Shuttle will work with and there are default settings for many popular programs. You can download a PDF list of the current settings we support from our website on the Shuttle PRO v2 product page, <https://www.contourdesign.com/product/shuttlepro-v2/>.

If the program you are looking for is not on the list, there are 3 options available for you. There are user made settings available on our forum to search through, <http://forums.contourdesign.com/>. You can also create your own custom settings using the instructions on page 3 and 4. Lastly, you can reach out to us at shuttle@contourdesign.com, for help making custom settings.

5. Can the Shuttle work with Android?

Currently no, our main focus is Mac and Windows.

6. Can you lock the Shuttle to one program?

The Shuttle will not lock to one program. It works by generating keystrokes that would be automatically directed toward the foreground application. This applies to both Mac and Windows.

Frequently Asked Questions Continued

7. I want to use the Shuttle with software I am developing but don't want to use the Shuttle Control Panel/Device Configuration. Is there a software development kit for the Shuttle?

Yes, please email us your information at shuttle@contourdesign.com. Someone will contact you with the SDK files.

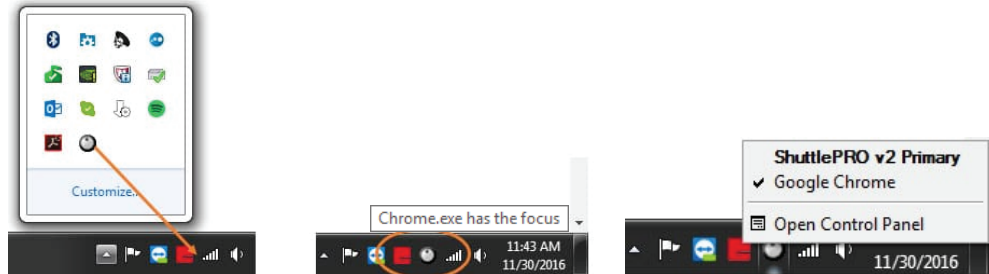
8. Why can't I leave the Shuttle icon with the hidden icons and what does the term "in focus" mean? (Windows users)

The term "in focus" refers to which program is in the foreground. The Shuttle works much like a keyboard and will respond to the program that is in the foreground. To use the Shuttle on another program, you will need to click on the program before using the Shuttle.

Moving the Shuttle icon to the clock area allows you to confirm which settings are being used for the program that is in focus. If you have more than one setting created for a specific program, this allows you to switch between settings. Also, there are some programs that have more than one default setting available. This will help prevent any confusion if you are changing the custom settings and not noticing the changes while using the Shuttle.

To move the Shuttle icon, simply click the up arrow near the clock area, then drag the Shuttle icon to any area near the clock.

Once the Shuttle icon is always visible, you will be able to see which program is in focus by hovering the cursor over the Shuttle icon. When you click the icon, the settings selected by the Shuttle driver will be displayed with a check mark next to it.



For more information please visit:
www.contourdesign.com

Contour Design, Inc.
10 Industrial Drive
Windham, New Hampshire 03087, USA
Phone: (603) 893-4556
Email: ergoinfo@contourdesign.com

Contour Design Nordic A/S
Borupvang 5B, St.
DK-2750 Ballerup / Denmark
Phone: +45 32 46 11 20
Email: info@contour-design.com

Tested to comply with FCC
and IC standards



FCC Statement

Changes or modifications not expressly approved by the party responsible for compliance could void the user's authority to operate the equipment.

This equipment has been tested and found to comply with the limits for a Class B digital device, pursuant to Part 15 of the FCC Rules. These limits are designed to provide reasonable protection against harmful interference in a residential installation. This equipment generates uses and can radiate radio frequency energy and, if not installed and used in accordance with the instructions, may cause harmful interference to radio communications. However, there is no guarantee that interference will not occur in a particular installation. If this equipment does cause harmful interference to radio or television reception, which can be determined by turning the equipment off and on, the user is encouraged to try to correct the interference by one or more of the following measures:

- Reorient or relocate the receiving antenna.
- Increase the separation between the equipment and receiver.
- Connect the equipment into an outlet on a circuit different from that to which the receiver is connected.
- Consult the dealer or an experienced radio/TV technician for help.

This device complies with part 15 of the FCC rules. Operation is subject to the following two conditions (1) this device may not cause harmful interference, and (2) this device must accept any interference received, including interference that may cause undesired operation.

IC Statement

This device complies with Industry Canada's licence-exempt RSSs. Operation is subject to the following two conditions:

- (1) This device may not cause interference; and
- (2) This device must accept any interference, including interference that may cause undesired operation of the device.

The term "IC: " before the certification/registration number only signifies that the Industry Canada technical specifications were met. This product meets the applicable Industry Canada technical specifications.

Le présent appareil est conforme aux CNR d'Industrie Canada applicable aux appareils radio exempts de licence. L'exploitation est autorisée aux deux conditions suivantes : (1) l'appareil ne doit pas produire de brouillage, et (2) l'utilisateur de l'appareil doit accepter tout brouillage radioélectrique subi, même si le brouillage est susceptible d'en compromettre le fonctionnement

Warranty

If there is a functional defect due to faulty manufacturing, we will replace the product. This warranty does not cover damage that results from misuse of the product.

Attention!

If you attempt to dismantle your Shuttle, you will invalidate your warranty.