



TAD – 7025 Highgrade Superior Performance High-Mu Twin Triode

The TAD™ 7025 Highgrade is a miniature, high-mu twin triode for the most demanding amp stages. Great for warm clean tones and creamy overdrive. Selected and recommended for guitar amps to improve overall response. Best for clean tones as well as for those deep-bass required for modern preamps. Recommended for 1st gain stage. Upgrades any 12AX7A and ECC83 tubes. Replaces E83CC tubes. Supports the demands of HI END Application with defined bass with resonant voices and clear and open trebles for outstanding separation.

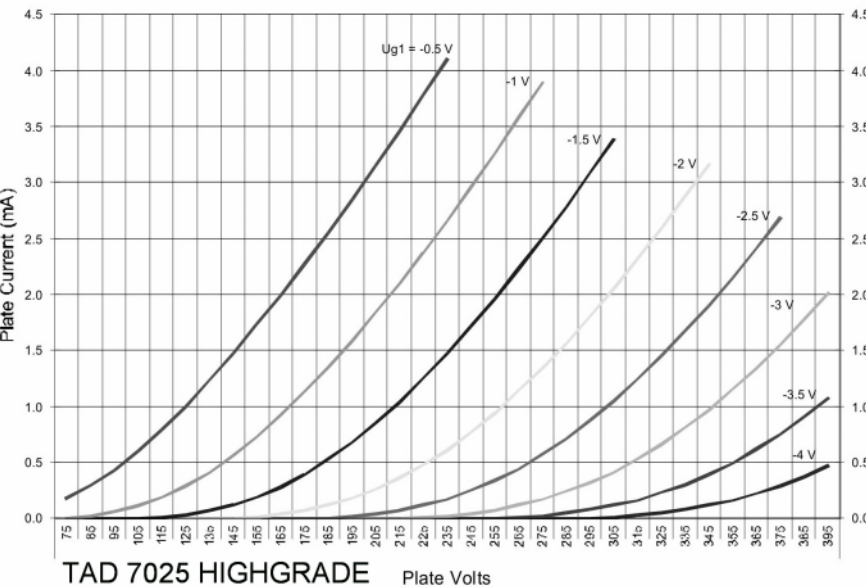
The TAD™ 7025 Highgrade can replace any ECC83, E83CC, 12AX7, 12AX7A, 12AX7M, 12AX7WA/WB/WC/LPS/EH, 5751 or 7025.

Characteristics of a bogey tube:

Electrical		
Heater:	Series	Parallel
Voltage (AC or DC)	12.6V +/-1.0	6.3+/-0.5
Current	0.15	0.3
Heating	Indirect	
Cathode-to-heater potential, max.	150 V	
Direct interelectrode capacitances, max.***		
Grid to plate	1.5 pF	
Grid to cathode	1.7 pF	
Grid to heater	0.2 pF	
Plate to cathode	0.3 pF	
Mechanical		
Operating Position	Any	
Base	E9-1, Small Button 9 Pin	
Dimensions:		
Height	56 mm	
Seated height	49 mm	
Diameter	22.5 mm	
Cooling	conventional	
Approximate net weight	13 g	

AF Power Amplifier

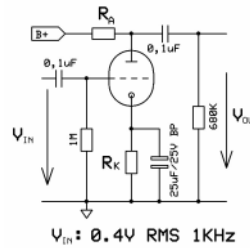
Maximum ratings	
DC plate voltage	330 V
Positive DC Grid Voltage	0 V
Negative DC Grid Voltage	-55 V
Plate dissipation	1.2 W
Bulb temperature (surface hottest point)	160°C
Cathode Current	8 mA



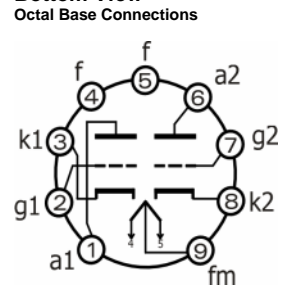
RT010, 7025 Highgrade

B+ / V	R _A / kΩ	R _K / kΩ	V _{Out} / V _{RMS}	V _{Out} / V _{IN}	THD / %	I _A / mA
200	47	1.50	14,8	37,0	6,3	0,8
250	47	1,20	16,6	41,5	4,9	1,1
300	47	1,00	18,0	45,0	2,9	1,4
350	47	0,82	19,0	47,5	2,1	1,9
400	47	0,68	20,0	50,0	1,6	2,4
200	100	1,80	19,0	47,5	5,3	0,6
250	100	1,50	20,9	52,3	4,0	0,8
300	100	1,20	22,5	56,3	2,7	1,1
350	100	1,00	23,6	59,0	2,0	1,3
400	100	0,82	24,5	61,3	1,6	1,6
200	220	2,70	20,8	52,0	6,0	0,4
250	220	2,20	22,8	57,0	4,1	0,5
300	220	1,50	24,9	62,3	3,2	0,7
350	220	1,20	26,4	66,0	2,2	0,9
400	220	1,00	27,4	68,5	1,8	1,1

Test arrangement:



Bottom View



Outline View

